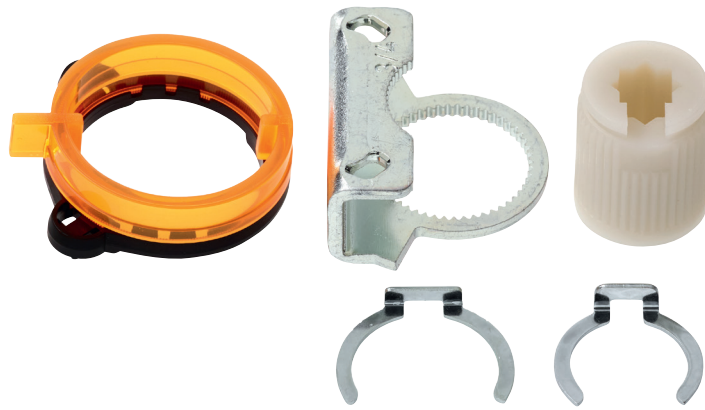


Form fit insert 8x8 mm

- for LM..A, TM..A
- with angle of rotation limiter and position indication



#### Technical data

<b>Weight</b>	Weight	0.050 kg
	Packaging size	Multi-pack 20 pcs.

#### Product features

<b>Used materials</b>	Thermo-plastic material Galvanised steel
<b>Application</b>	Suitable for LM..A, LMC..A, TMC..A

